



LEGACY OF SERVICE:
Runge says goodbye
after 28 years on board,
see interview on page 4



Energy INSIDER

A BIMONTHLY PUBLICATION OF MIDLAND POWER COOPERATIVE • MIDLANDPOWER.COOP • MAY & JUNE 2023

EARTH DAY EVENT HIGHLIGHTS COOPERATIVE EFFORTS ON SUSTAINABLE, RELIABLE ENERGY

Thanks to the work of Midland Power Cooperative and its wholesale power providers, Iowa's electric generation portfolio has never been cleaner. That was the message at Midland Power's Earth Day Celebration event held at the co-op's Boone office in April.

"This was an opportunity for us to showcase our renewable energy programs, as well as the tremendous strides our wholesale power providers have made incorporating solar and wind energy into their re-

source portfolios while still focusing on affordability and reliability," said Midland Power CEO Bill McKim. "This is a success story and it's important we tell it."

The day's presentations kicked off with Jim Sayers, an ambassador for the Beneficial Electrification League, discussing how electrification provides surprising environmental benefits.

By switching from heating with natural gas or propane to a high-efficiency air and ground-source heat

pump, members can take advantage of the growing share of solar and wind energy on the grid, lowering their home or business's carbon footprint, he explained. He also pointed out that Midland's members can take advantage of the co-op's heat pump rebates and discounted heat rates, resulting in significant savings on their energy bills.

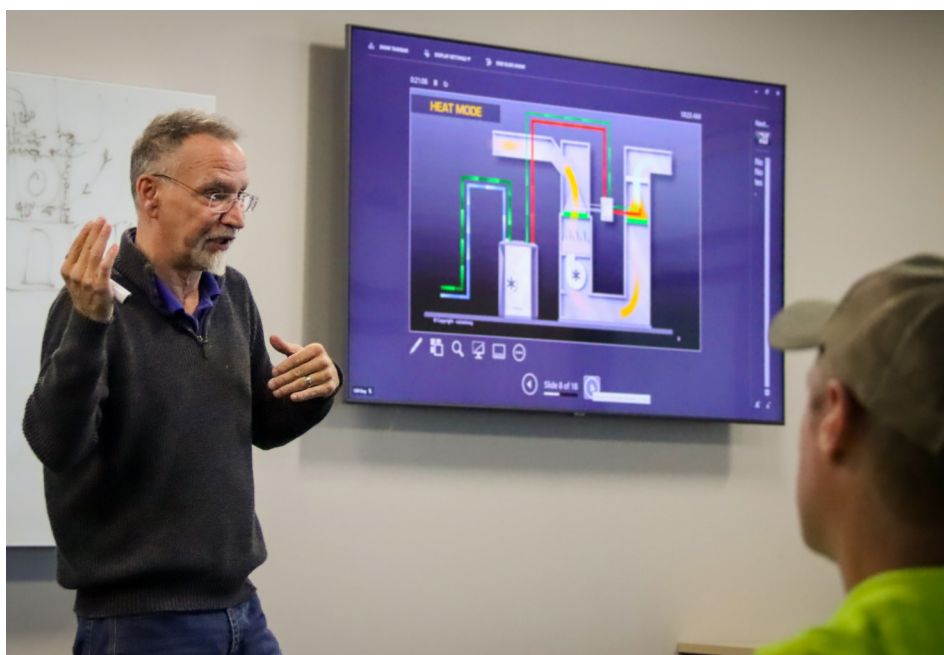
Kerry Koonce, vice president of communications and corporate relations at Central Iowa Power Cooperative (CIPCO), and Jacob Olberd-

ing, vice president of power supply at Corn Belt Power Cooperative, highlighted some of their co-ops' recent clean energy projects.

For CIPCO, these include the recent addition of the Wapello Solar Project, a 100-megawatt solar field in Louisa County, Iowa, and their expanded wind portfolio, which now boasts more than 317 megawatts of wind energy. Koonce emphasized that CIPCO carefully balances

Continued on page 2 ▶

Cooperatives focus on latest in heat pump technology



Steve Kapaun, president of Harvest Heating and Air Conditioning in Ames, presents on his innovative heat pump technology during a recent meeting of cooperative energy services staff.

Representatives from electric cooperatives across Iowa gathered in March to learn about a locally developed innovation in air source heat pump technology.

Organized by Midland Power, the presentation by Steve Kapaun, president of Harvest Heating and Air Conditioning of Ames, showcased the company's True Supplemental Heat hybrid system. The technology enables air source heat pumps to operate at lower outside temperatures, resulting in additional operating efficiency, and saving members money on their energy bills.

Kapaun, who is currently working to validate the system's savings data, is simultaneously scaling up production with hopes of expanding his market share.

Air source heat pumps work by

taking heat from the outside air and boosting it to a higher temperature using a compressor. It then transfers the heat to the heating system in a home or business. The process is reversed during warm weather months to provide cooling.

The result can be savings of up to 36 percent compared to a conventional propane furnace and up to 27 percent compared to a natural gas furnace.

Midland members can also take advantage of the co-op's special heat rate which utilizes a second meter to track the usage of a home's heating and cooling system and then bills that usage at a discounted rate.

For more information on air source heat pumps, current efficiency rebates, or our discounted heat rate, contact our energy services team at (800) 833-8876.

BUDGET BILLING

Midland's Budget Billing Plan is a free program designed to reduce the fluctuations of monthly billing amounts. It is available to all residential members whose electric consumption is less than 3,000 kWh per month.

To learn more or to sign up by phone, call us at **(800) 833-8876**, visit MidlandPower.coop/BudgetBilling or sign up with **SmartHub** using your account!

MEMBERSHIP GUIDE NOW AVAILABLE

Members can pick up a copy at any of our offices or call us at **(800) 833-8876** to request one be sent by mail.

An online version is also available by visiting MidlandPower.coop/MembershipGuide.





Artwork courtesy of Emma McGuigan

McGuigan selected for 2023 Youth Tour

Roland-Story High School's Emma McGuigan will be heading to Washington, D.C. this summer to represent Midland during the annual Electric Cooperative Youth Tour

McGuigan will join students from across Iowa and the nation for the week-long trip in June. On the tour, students learn about electric cooperatives, American history, and the U.S. government. Often called the "trip of a lifetime," students walk



Emma McGuigan

away with a greater understanding of their role as American citizens. Students will also participate in leadership training, have engaging one-on-one conversations with elected officials, and tour the capital's monuments and museums.

All area sophomore and junior high school students were eligible to apply and applications for next year's trip will be available in the fall at MidlandPower.coop/YouthTour.



Midland Power's Larry Beilke discusses the cooperative's EV task force findings.

▶ EARTH DAY from page 1

adding new alternative energy sources with maintaining the critical baseload power necessary to ensure reliable service.

For Corn Belt, Olberding showcased how the wholesaler has taken steps to incorporate cleaner energy alternatives, including adding a 150-kilowatt solar power array at their Wisdom Station generation facility near Spencer, Iowa, converting one of their Wisdom Station coal units to natural gas in 2014, and installing a 1.425-megawatt Tesla® Megapack battery system to store cheaper off-peak energy, feeding it back into the grid during more expensive peak demand times.

Olberding explained that just like Midland Power is a member of Corn Belt, Corn Belt is a member of Basin Electric Power Cooperative, a "super" generation and transmission cooperative based in Bismarck, North Dakota. From 2000 - 2021, Basin Electric rapidly expanded their renewable generation portfolio, while also making hefty investments in carbon capture technology, he said.

Basin Electric subsidiary, Dakota Gasification Company, will soon expand its carbon capture capacity at its Great Plains Synfuels Plant located near Beulah, North Dakota. Currently, the plant captures approximately 2 million metric tons of carbon dioxide (CO2) emis-

sions annually and hopes to begin capturing an additional 1.5 million metric tons of CO2 per year.

Midland Power's energy services team then presented on two topics they frequently get questions on: electric vehicles and solar energy systems.

As detailed in the last issue of *Energy Insider*, Midland Power launched a special EV task force last year to plan for the increased adoption of electric vehicles in our service area. Midland Power Energy Service Advisor Larry Beilke outlined the task force's findings, which include asking EV owners to help the co-op plan future infrastructure improvements by registering their EVs at MidlandPower.coop/EV.

Lastly, Caleb McKim, energy services specialist at Midland Power, gave an overview of solar power options for homeowners. From on-site solar to Midland's Community Solar Program, McKim broke down the pros and cons of each option, allowing home and business owners to evaluate their choices and make a fully informed decision on which option may work best for them.

Members had the option of attending in person or watching live via the co-op's Facebook page. In-person attendees also had a chance to take a test ride in a new Ford Lightning.

All of the day's presentations are available to watch on the co-op's YouTube channel at YouTube.com/MidlandPowerCoop.



Midland's Earth Day presentation was broadcast live on the co-op's Facebook page and is available to view in its entirety at Youtube.com/MidlandPowerCoop.



Al Burrows, a member from Polk City, checks out the features of a new Ford F-150 Lightning.

Nominate a local volunteer and they could win \$2,500 for their charity!

Contest entries accepted at IowaShineTheLight.com during the month of June












ANNUAL MEETING COMING IN JUNE

The 31st Annual Meeting of the members of Midland Power Cooperative will be Wednesday, June 29 at 7 p.m. immediately following the Jefferson member appreciation event at Clover Hall, 601 E. Lincoln Way, Jefferson.

A virtual option will also be available for viewing the meeting online. Visit Facebook.com/MidlandPower on meeting day to watch live.

The official notice and ballot will be mailed in early June.

2023 BOARD OF DIRECTOR CANDIDATES

<p>DISTRICT 1</p>  <p>Paul Heineman <i>(incumbent)</i></p>	<p>DISTRICT 2</p>  <p>Jeremy Davis</p>	<p>DISTRICT 2</p>  <p>Dr. Charles Holz</p>	<p>DISTRICT 2</p>  <p>Matthew Kruse</p>
<p>DISTRICT 2</p>  <p>Doug Robey <i>(incumbent)</i></p>	<p>DISTRICT 3</p>  <p>Michael Coleman <i>(incumbent)</i></p>	<p>DISTRICT 4</p>  <p>Todd Kjormoe</p>	<p>DISTRICT 4</p>  <p>Paul Skartvedt</p>



Midland Power Cooperative welcomed a new employee in April.

David Speed joined the team as the manager of community and business development.

In his role, Speed will be responsible for helping attract and retain businesses to the service area. He will also work with Midland's largest key accounts and manage the co-op's revolving loan fund.

An Iowa native, Speed grew up in Waterloo and graduated from Iowa State University's Ivy College of Business, where he earned his bachelor's degree in supply chain management.

Speed most recently served as the warehouse and distribution manager with Mrs. Clark's Foods in Ankeny. In that role, he oversaw the supply chain for regional, national, and international brands, managing an inventory of more than \$7.5 million in raw and finished goods.

Outside of work, Speed enjoys spending time with his wife, Pamela, and their three young boys.

Please join us in welcoming David to the Midland Power team!



We will be closed May 29 in observance of Memorial Day and July 4 in observance of Independence Day!



SIGN UP TODAY!

Manage your account, view and pay your bill, monitor usage, report power outages, and get co-op news and alerts!

Download the app by scanning the code or by going to www.smarthubapp.com

SUMMER HOURS

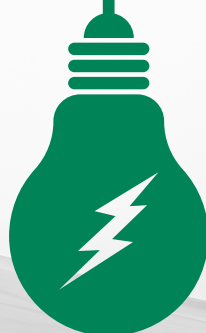
We will be switching to our extended summer hours from **Tuesday, May 30 - Tuesday, September 5.**

Monday-Thursday • 7 a.m. - 4:30 p.m.
Friday • 7 - 11 a.m.

Our offices will close at 11 a.m. on Fridays, but crews will maintain regular hours. Members can always call in for services or to pay their bill at **(800) 833-8876** or pay online with **Smart Hub!**

2023 MEMBER APPRECIATION EVENTS

Powering Forward Together!



MARK YOUR CALENDARS for our **FREE Member Appreciation Events!** Bring your friends and family for a delicious meal and desserts, along with an evening of fun events, door prizes, and more!

JUNE 20 - HUMBOLDT
Midland Power Office
1210 13th St. N., Humboldt

JUNE 22 - IOWA FALLS
Midland Power Service Center
730 S. River St., Iowa Falls

JUNE 27 - BOONE
CASE IH Building
1827 217th Rd., Boone

JUNE 29 - JEFFERSON
Clover Hall
601 E. Lincoln Way, Jefferson

All events from 5:00 - 7:00 PM

Join us immediately after the Jefferson event for our Annual Meeting!

CORN PICKERS & ELECTRICITY

AN INTERVIEW WITH JACK RUNGE

Midland Power Director Jack Runge will be stepping down from the board when his current term ends in June. Runge, who joined the board in 1995, has been instrumental in helping guide the cooperative, serving as board president from 2007 to 2021. Runge also spent 37 years as a firefighter for the Buckeye Fire Department, including becoming assistant chief. *Energy Insider* sat down with Runge recently to discuss his time on the Midland Power board.

You've served on the board for nearly three decades. During that time, what's been your focus?

I've always believed in ensuring Midland maintained a local presence in the communities we serve. Being local gives us the ability to respond to member needs in a timely fashion. Understanding our members' needs and concerns and then addressing them is what has created the success Midland has experienced over the years.

You're known for being a passionate advocate for co-ops. What makes the cooperative business model so special?

The seven cooperative principles make co-ops so unique from other types of businesses. Member control and economic participation are the two principles I point to most often. While the other cooperative principles are also important, member control is what guides the direction of a co-op, and returning patronage capital to members means they get to participate in the economic success of the business.

What does the word 'cooperative' mean to you?

People coming together to fill a common need or solve a problem that they cannot individually solve.

Explain the impact cooperatives have had in your own life and community.

My great-grandfather was part of a group of farmers that in the early 1900s decided it was time to take control of their destiny. This ironically grew out of a concern about the ability to purchase coal and purchase it at a reasonable price. There were two elevators in the small town of Buckeye providing this service, but farmers were not satisfied and decided to make an offer to buy one of the

businesses or they were going to build one of their own. One of the elevators accepted the offer. My grandfather and three other men personally signed a note to purchase the business. A stock company was formed, and when the law later allowed it, that stock company become a cooperative. I had the opportunity to serve on that board for 14 years. I was later elected to serve on the Midland board, a position I've held for the past 28 years.

What would you say to encourage others to get involved with cooperatives?

If you want to be challenged, and if you want to be a part of serving your local community, serving on a cooperative board will be a rewarding experience. The best part, you will be doing it with people that are dedicated to also serving their local communities. The people you meet and get to work with in the process is the greatest reward.

Why are cooperatives going to be important for years to come?

The cooperative business model is one of the last means of local control in many of our rural communities. The control and insight it brings to the people using its services will become even more important in the future. It's critical that we continue to educate a new generation as to the importance of the cooperative business model and role it plays in the continued success of our communities.

My dad commented to me shortly after I was elected to the Midland board that the two things that changed his life the most were corn pickers and electricity. In the future, there will be new "corn pickers and electricity" that will change our lives, and the cooperative business model can, and will, be a part of bringing those changes to our communities.

Thank you, Jack, for your service to Midland Power and our communities!

Midland Power Cooperative Offices

Monday-Friday: 7:30 a.m. - 4:00 p.m.
 • 2005 S. Story Street, Boone, Iowa
 • 1210 13th Street North, Humboldt, Iowa
 • 1001 E. Lincoln Way, Jefferson, Iowa

Give Us a Call 24/7!

☎ Toll Free: 800.833.8876
 💰 Automated Pay-By-Phone
 888.470.4623

Find Us Online!

🏠 MidlandPower.coop
 ✉ mpcrec@midlandpower.coop
 📘 [Facebook.com/MidlandPower](https://www.facebook.com/MidlandPower)
 🐦 [Twitter.com/Midland_Power](https://twitter.com/Midland_Power)

Leadership: Bill McKim, CEO

Board of Directors: James Byriel, Randy Christensen, Michael Coleman, Bill Harleen, Paul Heineman, Tom Ingebritson, Kim Rinker, Doug Robey, Jack Runge, Joel Skow, Rick Thompson and Jim Vierkandt

Energy Insider Editor: Benjamin Ure